

A Multidisciplinary Approach to Colic: Helping Babies and Parents

Friday, November 4, 2022



Date and Time

Friday, November 4, 2022, 8 am to 11:45 am

Northwestern Medicine Central DuPage Hospital Bed Tower Conference Center

Course description

This program provides an updated multidisciplinary approach to evaluating and treating fussy infants. The content of this program is appropriate for physicians, occupational therapists, speech language pathologists and nurses who treat pediatric patients. You must actively participate to complete the course and ensure a dynamic learning experience.

Learning objectives

At the conclusion of this activity, the participant will be able to:

- Discuss the role of acid-blocking medications to treat fussy infants
- Recognize three common symptoms of feeding/swallowing concerns in the fussy infant
- Identify signs and symptoms associated with GERD-like symptoms in infants
- Identify reciprocal influences in the parent-child relationship
- Identify strategies used to calm fussy infants

[Continued >](#)



Agenda

7:15 am Registration and continental breakfast

8:00 am GERD in Infancy: The Myth Behind Acid and Silent Reflux
Mark H. Fishbein, MD*

8:45 am Insights into Infant Feeding: Clinical Evaluation and Treatment for the Fussy Baby
Diana Bohm MS, CCC-SLP/L

9:15 am Fussy Baby Management: An OT Perspective
Patti Ideran, OTR/L, CEIM

10:15 am Break

10:30 am The Parent/Baby Relationship—Meeting the Challenges of a Fussy Baby
Kate A. Benton, PhD
Stephanie Krantz, BSN, RN, IBCLC, RLC

11:15 am Clinical panel discussion

11:45 am Adjourn

*Ann & Robert H. Lurie Children's Hospital of Chicago at Northwestern Medicine Central DuPage Hospital and Northwestern Medicine Delnor Hospital is a collaborative program between Northwestern Memorial HealthCare and Lurie Children's and its affiliated physician groups. The provider(s) identified are neither agents nor employees of Northwestern Medicine Central DuPage Hospital or Northwestern Medicine Delnor Hospital.

Continued >

Faculty

Mark H. Fishbein, MD*

Pediatric Gastroenterologist
Ann & Robert H. Lurie Children's Hospital of Chicago
Associate Professor
Northwestern University Feinberg School of Medicine

Kate A. Benton, PhD

Licensed Clinical Psychologist
Early Intervention Specialist
Division of Developmental and Behavioral Pediatrics
Ann & Robert H. Lurie Children's Hospital of Chicago
Clinical Associate, Pediatrics
Northwestern University Feinberg School of Medicine

Diana Bohm, MS, CCC-SLP/L

Speech-Language Pathologist
Northwestern Medicine Central DuPage Hospital

Patti Ideran, OTR/L, CEIM

Pediatric Occupational Therapist Registered/Licensed
Certified Educator of Infant Massage
Rehabilitation Services/Peri-Natal Education
Northwestern Medicine Central DuPage Hospital

Stephanie Krantz, BSN, RN, IBCLC, RLC

Nurse Care Manager
Ambulatory Care Coordination
Northwestern Medicine



Mark H. Fishbein, MD, is medical director of the Pediatric Feeding Clinic at Northwestern Medicine Central DuPage Hospital. Dr. Fishbein is a pediatric gastroenterologist at Ann & Robert H.

Lurie Children's Hospital of Chicago and an associate professor of pediatrics at Northwestern University Feinberg School of Medicine. He co-authored *Food Chaining: The Proven 6-Step Plan to Stop Picky Eating, Solve Feeding Problems, and Expand Your Child's Diet*, and his research interests include parental stress and outcomes associated with childhood feeding disorders. Dr. Fishbein attended medical school at University of Illinois at Chicago and completed his pediatric residency and fellowship at University of Chicago.

Dr. Fishbein has no relevant non-financial relationships to disclose. He receives a salary from Children's Hospital of Chicago Faculty Practice Plan.

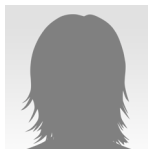


Kate Benton, PhD, is a pediatric psychologist who provides consultative, diagnostic and treatment services at Ann & Robert H. Lurie Children's Hospital of Chicago and Northwestern Medicine

Central DuPage Hospital as part of the physician-led Pediatric Feeding Clinic and Developmental and Behavioral Pediatrics team. She has clinical expertise in areas such as infant mental health, developmental delay, diagnosis of autism spectrum disorders, feeding disorders, and identification and treatment of social/emotional and behavioral concerns in young children. Dr. Benton received her doctoral degree from Loyola University Chicago and completed her post-doctoral training in developmental and behavioral pediatrics at Illinois Masonic Medical Center.

Dr. Benton has no relevant non-financial relationships to disclose. She receives a salary from Northwestern Medicine.

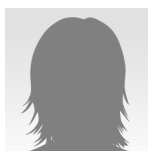
*Ann & Robert H. Lurie Children's Hospital of Chicago at Northwestern Medicine Central DuPage Hospital and Northwestern Medicine Delnor Hospital is a collaborative program between Northwestern Memorial HealthCare and Lurie Children's and its affiliated physician groups. The provider(s) identified are neither agents nor employees of Northwestern Medicine Central DuPage Hospital or Northwestern Medicine Delnor Hospital.



Diana Bohm, MS, CCC-SLP/L, is a speech-language pathologist with more than 15 years of hospital-based experience, specializing in the assessment and treatment of pediatric feeding and

swallowing disorders. She works at Northwestern Medicine Central DuPage Hospital providing outpatient assessments and treatment services to pediatric patients and their families as part of the multidisciplinary Pediatric Feeding Clinic offered in collaboration with Lurie Children's. Ms. Bohm provides inpatient treatment in the NICU and PICU, conducts videofluoroscopic swallow studies, and participates in clinical research studies. She has provided continuing education via pediatric feeding/swallowing presentations in the Midwest, co-authored a chapter on feeding in *The CALM Baby Method, Solutions for Fussy Days and Sleepless Nights*, and received the Tom Williams Award for Clinical Excellence in 2021.

Ms. Bohm has no relevant non-financial relationships to disclose. She receives a salary from Northwestern Medicine.

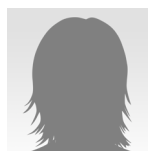


Patti Ideran, OTR/L, CEIM, has more than 35 years of experience in pediatric occupational therapy. In the last 15 years, she has focused on treating infants and toddlers. She is certified in Brazelton

Institute's Newborn Behavioral Observations system™. In addition, Ms. Ideran is a certified educator of infant massage, a certified baby and toddler yoga teacher, and is certified in the neurodevelopmental treatment approach in pediatrics. She co-authored *The CALM Baby Method, Solutions for Fussy Days and Sleepless Nights*.

Her areas of expertise include: Colic and disorders of state regulation; infants with crying, sleeping and feeding difficulties; infants and toddlers with feeding disorders; and sensory processing disorders and regulatory disorders in infants and toddlers. Ms. Ideran has established herself as an expert in this field and receives numerous referrals from physicians requesting her expertise. Ms. Ideran presents on these topics throughout the Midwest.

Ms. Ideran has no relevant non-financial relationships to disclose. She receives a salary from Northwestern Medicine.



Stephanie Krantz, BSN, RN, IBCLC, RLC, is a registered nurse, certified lactation consultant and childbirth educator with more than 35 years of experience working with new families. Her areas of expertise

include educating and supporting prenatal and postnatal parents and their families, as well as providing specialized inpatient and outpatient care of the nursing parent and family. Ms. Krantz has facilitated Postpartum Connection, a postpartum depression/anxiety support group for more than 20 years. She has worked with hundreds of new parents to help them understand and care for their little ones. She co-authored a chapter on postpartum families in *The CALM Baby Method, Solutions for Fussy Days and Sleepless Nights*.

Ms. Krantz has no relevant non-financial relationships to disclose. She receives a salary from Northwestern Medicine.

Program details

Program location

This program will be held in the Bed Tower Conference Center at Northwestern Medicine Central DuPage Hospital, 25 North Winfield Road, Winfield, Illinois.

Parking

Parking will be available at the main hospital entrance (west side) of Northwestern Medicine Central DuPage Hospital campus.

Audience

The content of this program is appropriate for physicians, dietitians, occupational therapists, speech language pathologists and nurses who treat pediatric patients.

Accreditation statement

The Northwestern University Feinberg School of Medicine is accredited by the Accreditation Council for Continuing Medical Education (ACCME) to provide continuing medical education for physicians.

Credit Designation Statement

The Northwestern University Feinberg School of Medicine designates this live activity for a maximum of *3.5 AMA PRA Category 1 Credit(s)*[™]. Physicians should claim only the credit commensurate with the extent of their participation in the activity.

Occupational Therapists

This course has been approved for 4.0 continuing education hours for occupational therapy practitioners. The Illinois Department of Financial and Professional Regulation, Division of Professional Regulation has certified Marianjoy Rehabilitation Hospital has complied with the provisions of the Illinois statutes and/or rules and regulations and is hereby authorized to sponsor the above-named course as a Continuing Education offering. Registered Occupational Therapy Continuing Education Sponsor: IDFPR License Number 224.000217.

Speech Language Pathologists

This course is offered for 0.35 ASHA CEUs (Intermediate Level).



ASHA CE
APPROVED PROVIDER

Marianjoy Rehabilitation Hospital,
part of Northwestern Medicine

Intermediate Level
.35 ASHA CEUs

Registration fee

There is no registration fee for Northwestern Medicine and Lurie Children's physicians and allied health professionals. For Northwestern Medicine and Lurie Children's physicians, please use your Northwestern Medicine or Lurie Children's contact information when you register.

The fee is \$35.00 for non-affiliated physicians and \$25.00 for non-affiliated allied health professionals. The fee includes a light breakfast and refreshments.

Registration procedure

The registration deadline is **Friday, October 28**. For questions or to register, call 630.933.4576 (TTY: 711).

Cancellation and refund policy

Prepayment prior to the start of class is required. Full refunds are granted for cancellations received at least one week prior to the start of the program. Refunds are not granted for cancellations less than one week prior to the start of the program. Classes cancelled due to low enrollment will result in a refund. .

Accessibility

Please contact 630.933.4576 if you require special accommodations to enroll in or attend this program.