

Safe bedside vascular access for patients with COVID-19

Updated 4/13/2020

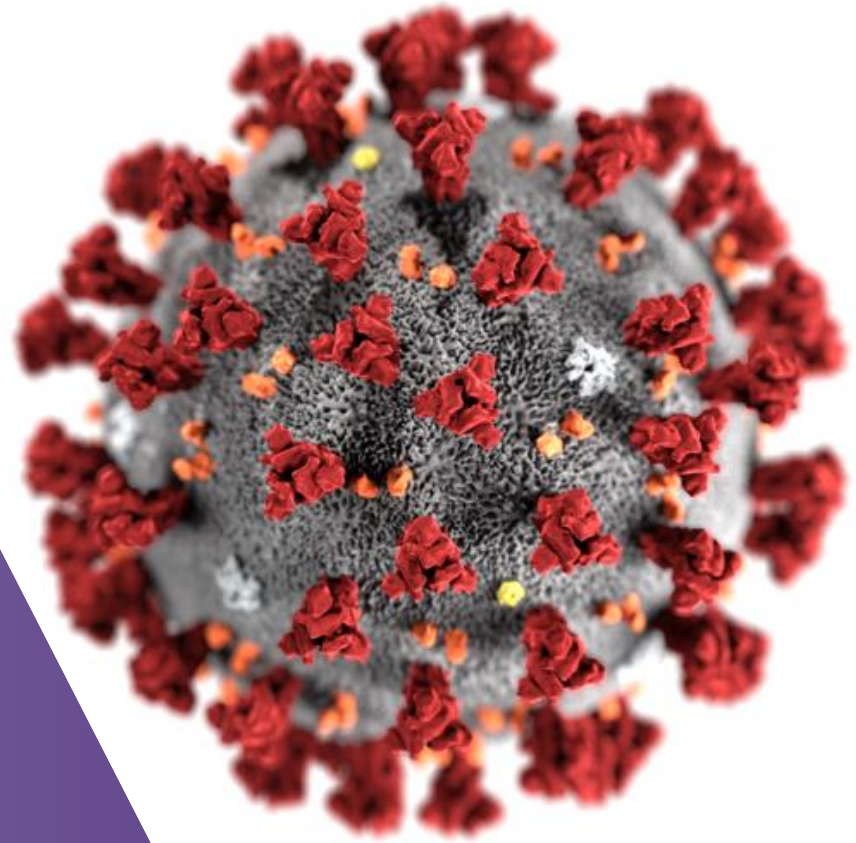
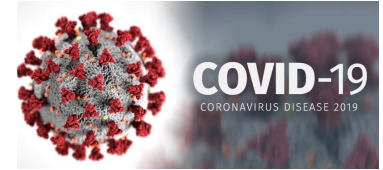


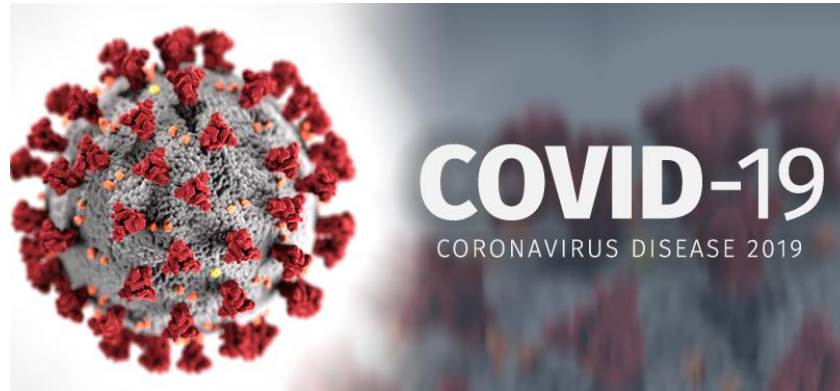
Table of Contents



• <u>Learning objectives</u>	Page 3
• <u>COVID-19 Vascular Access Needs</u>	Page 4
• <u>General Guidelines</u>	Page 5
• <u>PPE for Bedside Procedures</u>	Page 7
- <u>Safe Putting On (Donning) of PPE</u>	Page 8
- <u>Safe Removal (Doffing) of PPE</u>	Page 9
• <u>Central Venous Access</u>	Page 10
• <u>Arterial Lines</u>	Page 14
• <u>General US Guided Vascular Access Steps</u>	Page 15
• <u>Conclusions</u>	Page 19

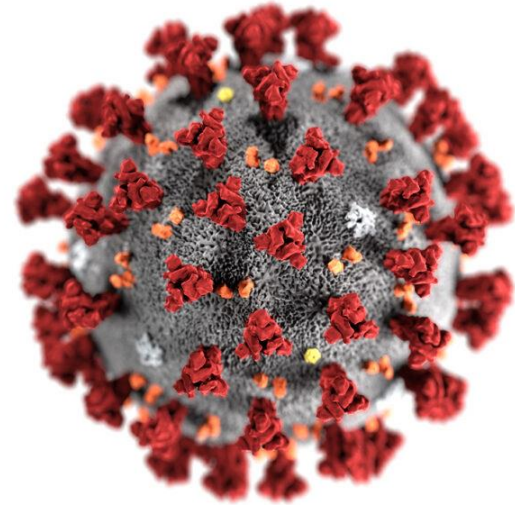
Learning objectives

- This educational module is designed to give an overview for safe and informed care of Covid-19 patients while performing bedside vascular access
- This module provides general guidelines to consider as well as access to additional resources



COVID-19 vascular access needs

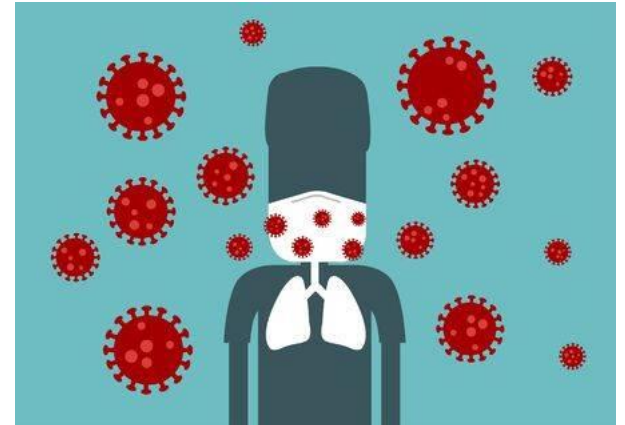
- Most COVID-19 positive patients have required vasopressors in the immediate peri-intubation period necessitating central venous access
- Most COVID-19 positive patients who require intubation can be expected to require serial arterial blood gas assessment to guide management of their respiratory failure necessitating arterial access



General Guidelines

All bedside procedures performed on COVID-19 patients

- All efforts should be made to minimize exposure to healthcare workers.
- Safety procedures, including donning and doffing of PPE, shall not be altered or rushed no matter how emergent the situation.
- Limit the number of healthcare providers in the room during the procedure.
- Procedures should be performed by the most experienced provider available.
- If multiple procedures are required, providers should make every effort to coordinate and batch these procedures to minimize trips in and out of the patient's room and conserve PPE while ensuring procedures are done safely.



General Guidelines

All bedside procedures performed on COVID-19 patients

- Careful preparation outside the room is strongly recommended. All necessary supplies should be gathered and checked prior to entering the room
- An outside the room time out, including a review of necessary supplies, should be performed.
- Clear lines of communication, possibly via white board, should be maintained through the window to a runner outside the room.



Proper PPE for bedside procedures

Prior to entering room

- For all providers in room
 - N95 respirator covered with surgical mask or PAPR (*Perform N95 seal test*)
 - Shield (preferred) or goggles
 - Non-sterile gown
 - Non-sterile gloves
 - Bouffant head cover
 - Consider knee-high trauma boots/shoe covers

Prior to placing sterile line

- Only for providers directly involved in line placement
 - Sterile gown
 - Sterile gloves

Sterile gown and gloves are placed **over non-sterile PPE** while in the patient's room.

Safe Putting On (Donning) of PPE

[Updated Videos and content on NMI](#)

[1. Putting on PPE with a New Surgical Mask or N95 Respirator Mask](#)

[2. Putting on PPE with a Used N95 Respirator Mask](#)

[3. Putting on PPE while Wearing a Continuous Use Surgical Mask or N95 Respirator Mask and Goggles or Face Shield](#)

[4. Perform N95 Seal Check](#)

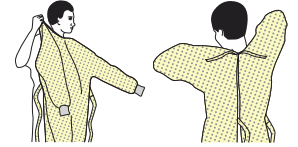
Sterile gown and gloves will be placed over standard PPE prior to sterile portion of the procedure

SEQUENCE FOR PUTTING ON PERSONAL PROTECTIVE EQUIPMENT (PPE)

The type of PPE used will vary based on the level of precautions required, such as standard and contact, droplet or airborne infection isolation precautions. The procedure for putting on and removing PPE should be tailored to the specific type of PPE.

1. GOWN

- Fully cover torso from neck to knees, arms to end of wrists, and wrap around the back
- Fasten in back of neck and waist



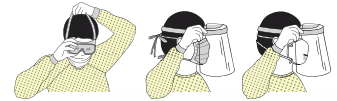
2. MASK OR RESPIRATOR

- Secure ties or elastic bands at middle of head and neck
- Fit flexible band to nose bridge
- Fit snug to face and below chin
- Fit-check respirator



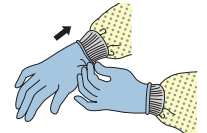
3. GOGGLES OR FACE SHIELD

- Place over face and eyes and adjust to fit



4. GLOVES

- Extend to cover wrist of isolation gown



USE SAFE WORK PRACTICES TO PROTECT YOURSELF AND LIMIT THE SPREAD OF CONTAMINATION

- Keep hands away from face
- Limit surfaces touched
- Change gloves when torn or heavily contaminated
- Perform hand hygiene

Safe Removal (Doffing) of PPE

[Updated Videos and content on NMI](#)

1. Removing PPE

2. Removing PPE while Wearing a Continuous Use Surgical Mask or N95 Respirator and Goggles or Face Shield

3. Wearing, Discarding, and Storing Masks

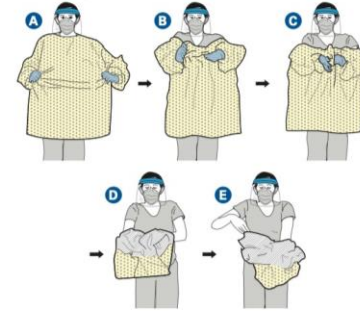
If feasible change scrubs after each patient.
Shower if soiled with blood or other bodily fluid.

HOW TO SAFELY REMOVE PERSONAL PROTECTIVE EQUIPMENT (PPE) EXAMPLE 2

Here is another way to safely remove PPE without contaminating your clothing, skin, or mucous membranes with potentially infectious materials. **Remove all PPE before exiting the patient room** except a respirator, if worn. Remove the respirator **after** leaving the patient room and closing the door. Remove PPE in the following sequence:

1. GOWN AND GLOVES

- Gown front and sleeves and the outside of gloves are contaminated!
- If your hands get contaminated during gown or glove removal, immediately wash your hands or use an alcohol-based hand sanitizer
- Grasp the gown in the front and pull away from your body so that the ties break, touching outside of gown only with gloved hands
- While removing the gown, fold or roll the gown inside-out into a bundle
- As you are removing the gown, peel off your gloves at the same time, only touching the inside of the gloves and gown with your bare hands. Place the gown and gloves into a waste container



2. GOGGLES OR FACE SHIELD

- Outside of goggles or face shield are contaminated!
- If your hands get contaminated during goggle or face shield removal, immediately wash your hands or use an alcohol-based hand sanitizer
- Remove goggles or face shield from the back by lifting head band and without touching the front of the goggles or face shield
- If the item is reusable, place in designated receptacle for reprocessing. Otherwise, discard in a waste container



3. MASK OR RESPIRATOR

- Front of mask/respirator is contaminated — **DO NOT TOUCH!**
- If your hands get contaminated during mask/respirator removal, immediately wash your hands or use an alcohol-based hand sanitizer
- Grasp bottom ties or elastics of the mask/respirator, then the ones at the top, and remove without touching the front
- Discard in a waste container



4. WASH HANDS OR USE AN ALCOHOL-BASED HAND SANITIZER IMMEDIATELY AFTER REMOVING ALL PPE



PERFORM HAND HYGIENE BETWEEN STEPS IF HANDS BECOME CONTAMINATED AND IMMEDIATELY AFTER REMOVING ALL PPE

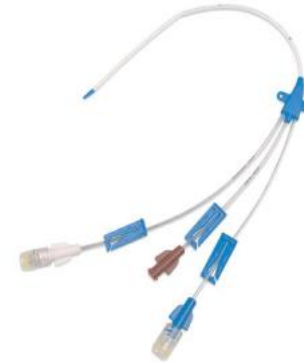


Central venous access



Full PPE is required

- Most COVID-19 positive patients in our center have required vasopressors in the immediate peri-intubation period.
- This should be anticipated and prepared for by the care team with a plan for central venous access once the airway is secured.
- To limit exposure of PICC placement providers, **triple lumen catheters are preferred as a first line** for vasopressor administration.
- PICCs should be considered if vasopressor requirement is expected to last for longer than 10 days or long term central IV access is needed for other indications.



Central venous access

Line considerations



Full PPE is required

- Unless there are contraindications, the **Left internal jugular vein** is preferred for central venous access as many critically ill COVID-19 patients will eventually require a tunneled right IJ HD catheter.
- Consider placement of a trialysis line in place of a TLC if the patient has underlying CKD or severe AKI in anticipation of renal replacement therapy.
- If trialysis catheter is not available consider double sticking left IJ
- **Perform the procedure using standard ultrasound-guided technique**



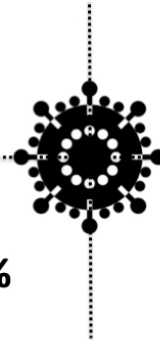
Incidence of AKI
0.5-23%

Naicker S, et al. *Kidney Int* 2020; doi.org/10.1016/j.kint.2020.03.001



More common in
ICU setting
8.3% vs 2.0%

Wang D, et al. *JAMA* 2020; 323 (11): 1061-69



Need for CRRT
0.8-9%



Cheng Y, et al. *Kidney Int* 2020; doi.org/10.1016/j.kint.2020.03.005
Guan W, et al. *NEJM* 2020; doi:10.1056/NEJMoa2002032

Urinary abnormalities
Albuminuria 34%
Proteinuria 63%
Hematuria 26.7%
Both 44%



Naicker S, et al. *Kidney Int* 2020; doi.org/10.1016/j.kint.2020.03.001

Central venous access

Standardized site preference



Full PPE is required

In order of priority for TLC, trialysis or alternate catheter

- Left IJ
- Right IJ
- Left subclavian
- Right subclavian
- Femoral

In order of priority for temporary HD catheter (Not trialysis)

- Right IJ
- Left IJ
- Left subclavian
- Right subclavian
- Femoral

These are general recommendations. Patient factors and physician judgement should also be considered in consultation with the critical care team.

Consider avoiding subclavian access on COVID-19 patients requiring high PEEP.

Central venous access

Lower extremity access



Full PPE is required

- Many critically ill COVID-19 patients require prone ventilation making femoral access problematic due to
- kinking of the catheter
- Considerations for lower extremity venous access when necessary
 - Access femoral vein low to avoid the skin crease
 - Access the great saphenous vein in the thigh
 - Use long 55cm HD catheter with lateral stick and “tunnel” portion of the catheter subcutaneously to the vein
- **Perform the procedure using standard ultrasound-guided technique**



Arterial lines



Full PPE is required

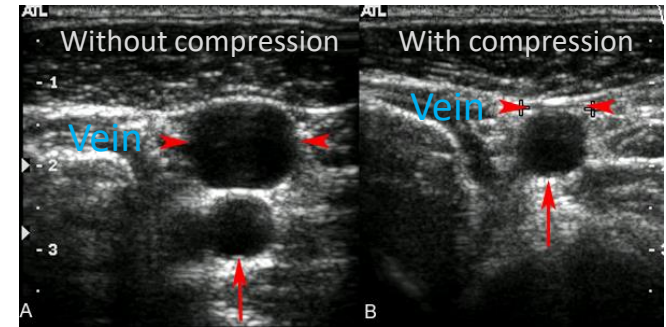
- Most COVID-19 positive patients who require intubation can be expected to require serial arterial blood gas assessment to guide management of their respiratory failure. Therefore, arterial line placement is recommended in patients with respiratory failure to avoid repeated provider exposure drawing blood gases.
- Radial artery access at the wrist is the preferred location
- If radial access is not available consider brachial access over femoral access to avoid issues with line kinking should the patient require prone positioning.
- Ensure nursing team and set up a-line setup with appropriate length tubing.
- **Perform the procedure using standard ultrasound-guided technique**

General US guided vascular access steps

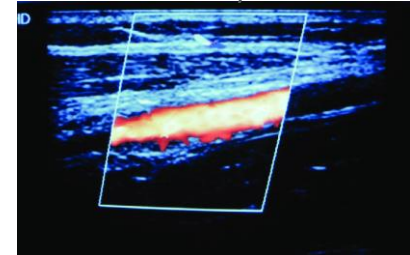
Step 1 – Identify target vessel

- Identify target vein or artery prior to prepping and draping
- Using ultrasound, visualize the target vessel in short and long access view
- Confirm patency of the vessel
 - Vein – use compression with the ultrasound probe to evaluate for venous thrombosis. Patent veins should compress fully
 - Arterial
 - Perform distal pulse exam and Allen test when appropriate
 - Use color flow or doppler to confirm vessel patency

Patent Internal Jugular Vein



Patent radial artery on color flow



General US guided vascular access steps

Step 2 – Use real-time US guidance for puncture of the vessel

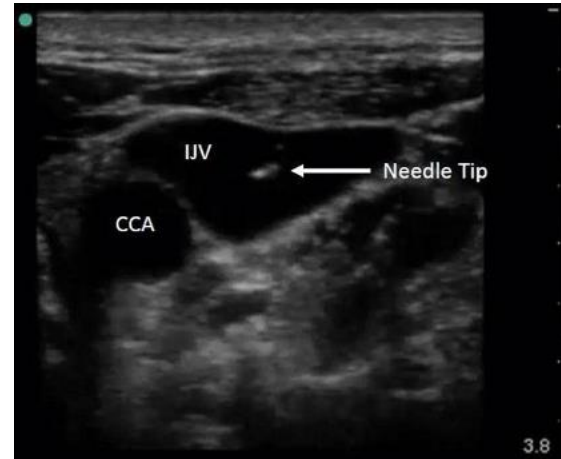
- Use sterile technique
- Use the short axis/out-of-plane or long-axis/in-plane approach
- Try to constantly visualize the tip of the needle during the approach and puncture of the target vessel
- Consider using a micropuncture system in patients who are coagulopathic, have small vessels or challenging anatomy



General US guided vascular access steps

Step 3 – Confirm needle position in the vessel

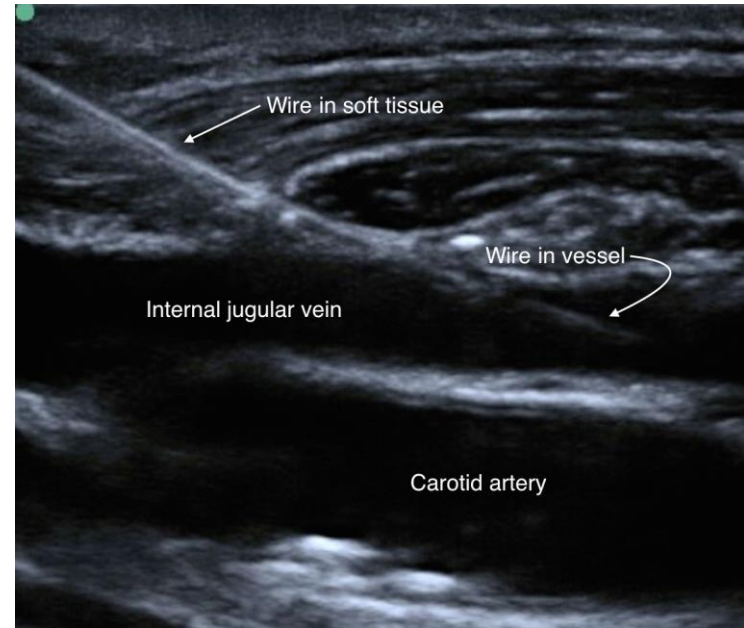
- Confirm the needle tip is placed centrally in the target vessel before introducing the guidewire



General US guided vascular access steps

Step 4 – Confirm wire position in the target vessel

- Confirm the correct position of the guide wire in a short and long axis
- Follow wire to full extent possible within the sterile field to ensure it remains within the target vessel



Conclusions

- Minimize the risk of exposure to yourself and team members with the proper use, putting on, and removal of PPE according to current guidelines
- Ensure you have all necessary equipment prior to entering the room
- The left IJ is the preferred site for central venous access
- **Standard femoral access can kink in patients that require prone ventilation**
- **Perform the procedure using standard ultrasound-guided technique**

